

Contact us : office@woodlands.staffs.sch.uk

Telephone : 01827 429020 [office open 8.00am–4.00pm]

Breakfast club bookings: bc@woodlands.staffs.sch.uk

School Website

www.woodlands.staffs.sch.uk

If you have any questions or concerns please contact your child's class teacher via the office.

If you have a whole school question or concern, please contact Mr Baker via the office.

Whole School Attendance (This year so far): 97.53%

Winning Team attendance (This year so far): Offa 98.13%

Well done to our WOW Workers - see the PowerPoint on the website

Class	Week Ending: 05.09.25	Week Ending: 12.09.25	Class	Week Ending: 05.09.25	Week Ending: 12.09.25
			<u>Birch</u>	Rueben	Rose
<u>Oak</u>	Tarla	Antonia	<u>Redwood</u>	Daniel	Laura
<u>Willow</u>	Elsie	Isla-Rose	<u>Chestnut</u>	Remey-Lei	Esme
<u>Elm</u>	Dixie	Ronnie	<u>Aspen</u>	Freddie S	Kyle



Welcome Back to Autumn Term 2025

It has been a great start to the year and the children have settled extremely well. It is great to have the school full of children again, they are smart, kind and caring.

Last week was a 'settling in' week and this week the children are in full swing. We have already had Democracy week with the children persuading their classmates to vote for them to be Class or Team Leaders. The children have learned about voting and also shown great bravery and skill in representing themselves to their peers– everyone who put their name forward should feel very proud of themselves.

The names of the new House Leaders was announced in WOW gathering today — the Class Leaders will be announce in Monday's Celebration Gathering

**Follow
traffic rules,
save your
future**



Please be mindful when crossing in Argyle Street and Canning Road they are both busy roads. We have had several adults reporting children stepping into streets in front of cars.

Please do not park on the yellow lines and Zig Zags outside the school.

House Leaders - Well done

Offa: Nina (Captain) & Carla

Ethelfleda: Poppie (Captain) & Sienna

Grazier: Isaac (Captain) & Robyn

Peel: Daisy (Captain) & Remey-Lee



School Website

The school website has all the information you need - there is information about the curriculum, timetable, PE days, Uniform, and PE uniform, calendar and all school policies.

www.woodlands.staffs.sch.uk



Holiday requests

Please remember to book holidays in the **school holidays**. Authority for term time holidays can only be given in 'exceptional circumstances'.

If you do need to take a holiday in term time, a leave of absence form needs to be completed from the school office.

Notes from the Office

ParentPay — Please login regularly and check your account to ensure balances are sufficient to pay for school dinners and Breakfast Club.

Thank you.

School dinners cost £3.20

Breakfast Club Costs
£3.50

Siblings £2



Key Dates:

Y6 Laches Wood—Wednesday 17th September–Friday 19th September

Open Evening—Monday 29th September 3.30pm–4.30pm

School Photographs—Thursday 2nd October

Kids Choice Menu—Thursday 2nd October

Sleepout for Charity– Saturday 4th October

Year 3/4 WOLF Day—Friday 10th October

Year 2 WOLF Day—Friday 17th October

School Disco (Non-Uniform more information to follow)—Monday 20th October

Jack & The Beanstalk Theatre Production—Wednesday 22nd October

Halloween Themed Menu—Wednesday 22nd October

School CLOSED—Thursday 23rd & Friday 24th October

Half Term—School Closed—Monday 27th -Friday 31st October

School Reopens—Monday 3rd November (Autumn 2 starts)

Reminders of expectations:



Children should be **reading at least 3 times per week**. This helps them attain the rewards they deserve.

Children's **attendance should be above 97%** - please avoid missing any days from school unless ill. Absence calls must be made by a parent or carer by calling the school office before **9.10am**.

There is a designated answer machine for absence messages. Miss Hodson will then follow up any attendance queries as needed.

For safety reasons; No hoodies or jewellery for PE. PE T-shirts should be plain white. Joggers should be plain black or Navy. PE kit is uniform not outdoor learning/forest clothing.

School gates open at 8:35am and close at 8:45am. Children arriving after 8:45am miss the start of learning and are marked as late!



Jack and The Beanstalk

We are excited to have the M and M production company come and perform again this term

The children love it when they come to school, as they get fully involved in the full production.

This term they will be performing Jack and the Beanstalk

We ask each child to bring a £3 contribution- this is the first time we have asked for a donation as the school has always found the funding, often with help from the PTA.

Autumn Curriculum

Foundation Ash: Marvellous Me

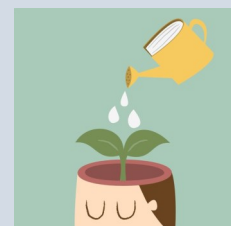
Year 1 Oak: Materials & Early Childhood

Year 2 Willow: The Human Body and survival, Significant People from the past

Year 3 Birch: The Skeletal System, Stone Age and early history

Year 4 Elm: The Digestive System and Invaders- Vikings and Normans

Year 5/6 Chestnut, Aspen, Redwood: Forces, gravity and upthrust, The Shang Dynasty in China



Practice Packs and Practice Pieces



To help children master key skill and knowledge, that they need to continue their learning, teachers will provide exercises for the children to practise at home - these are extremely important to help the children with their learning- please help them by encouraging them to do the activities - either with an adult or independently.

Sleepout for Charity

On **October 4th** Mr Baker will be sleeping rough to help raise funds for a local charity.

Betterway Recovery is holding an annual sleepout to help raise funds - for more information or to even donate - very much appreciated, please click on the link:

<https://www.givewheel.com/fundraising/10223/jon-bakers-better-way-recovery-sleep-out-2025/>

